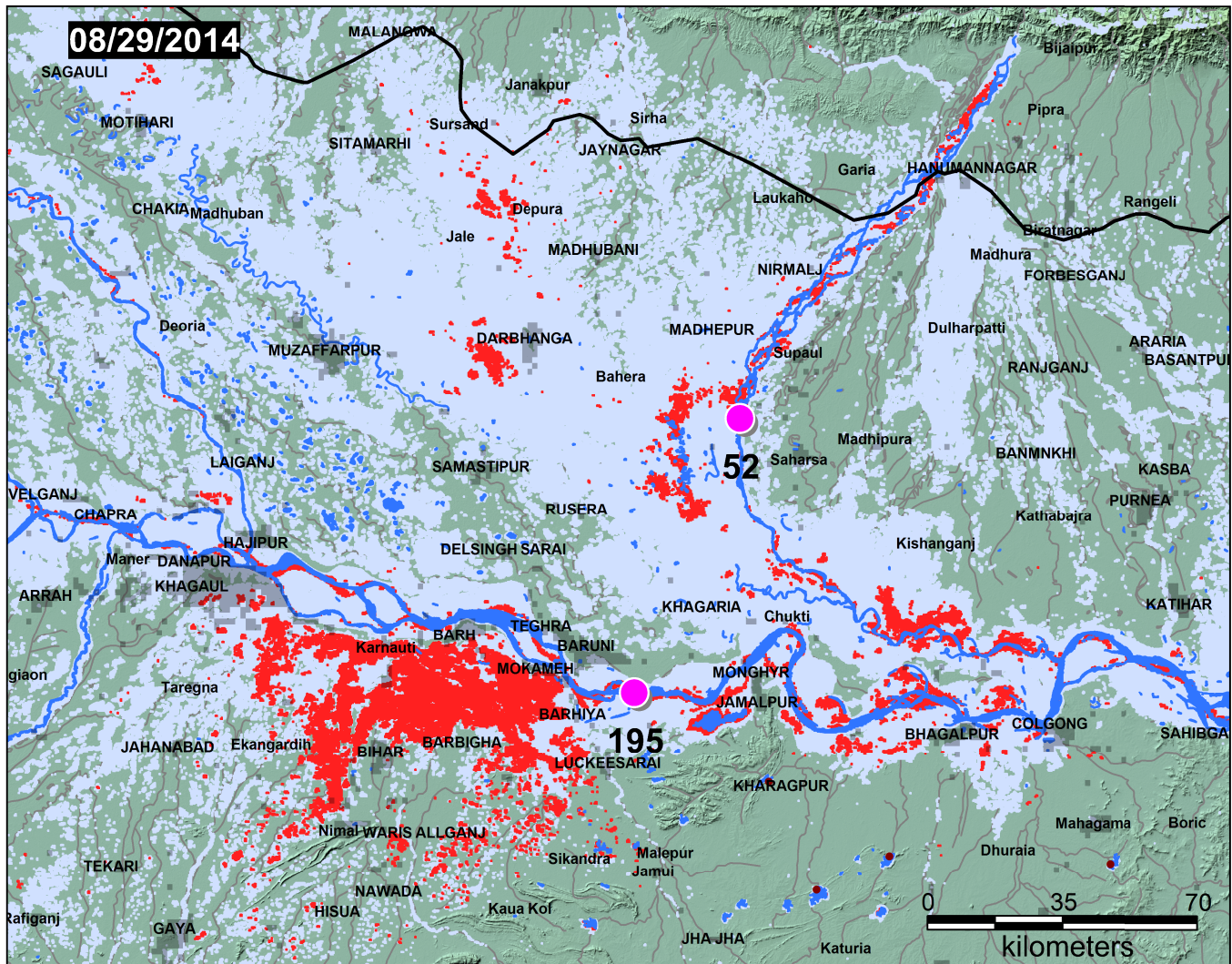


# 2014 Flooding in Bihar, India; DFO Event #4174

## Flood Extent Compared to June Surface Water



Funding support from NASA Applications Program

### Mapping Source Data and Methods

This map may incorporate MODIS Rapid Response Subset 250 m data provided by NASA's LANCE System: <http://earthdata.nasa.gov/data/near-real-time-data/rapid-response/modis-subsets>. It may also incorporate 250 m data from an automated MODIS near real time processor (see <http://oas.gsfc.nasa.gov/floodmap/home.html>).

Historical flood information is from the Flood Observatory Surface Water Record archive (<http://floodobservatory.colorado.edu/>).

Landsat 8 data, if available, are provided by the United States Geological Survey Hazards Data Distribution System (HDDS). Landsat 8 is jointly managed by NASA and the U.S. Geological Survey.

At selected locations, time series of satellite microwave-measurements of river discharge changes are available. Access online version (see below) and click on the colored dots.

Citation for this map: Brakenridge, G. R., Slayback, D., Kettner, A.J., and Policelli, F., 2014, Rapid response mapping of the 2014 flooding in Bihar, India, DFO Event #4174, <http://floodobservatory.colorado.edu/Version3/2014Bihar4174.html>.

- Flooding, August 1, 2014 to date shown
- All Flooding (2000-2013)
- MODIS NRT surface water, June, 2014 composite

### Flow Status

- Major Flooding ( $r > 5$  yr)
- Moderate Flooding
- Normal Flow
- Low Flow