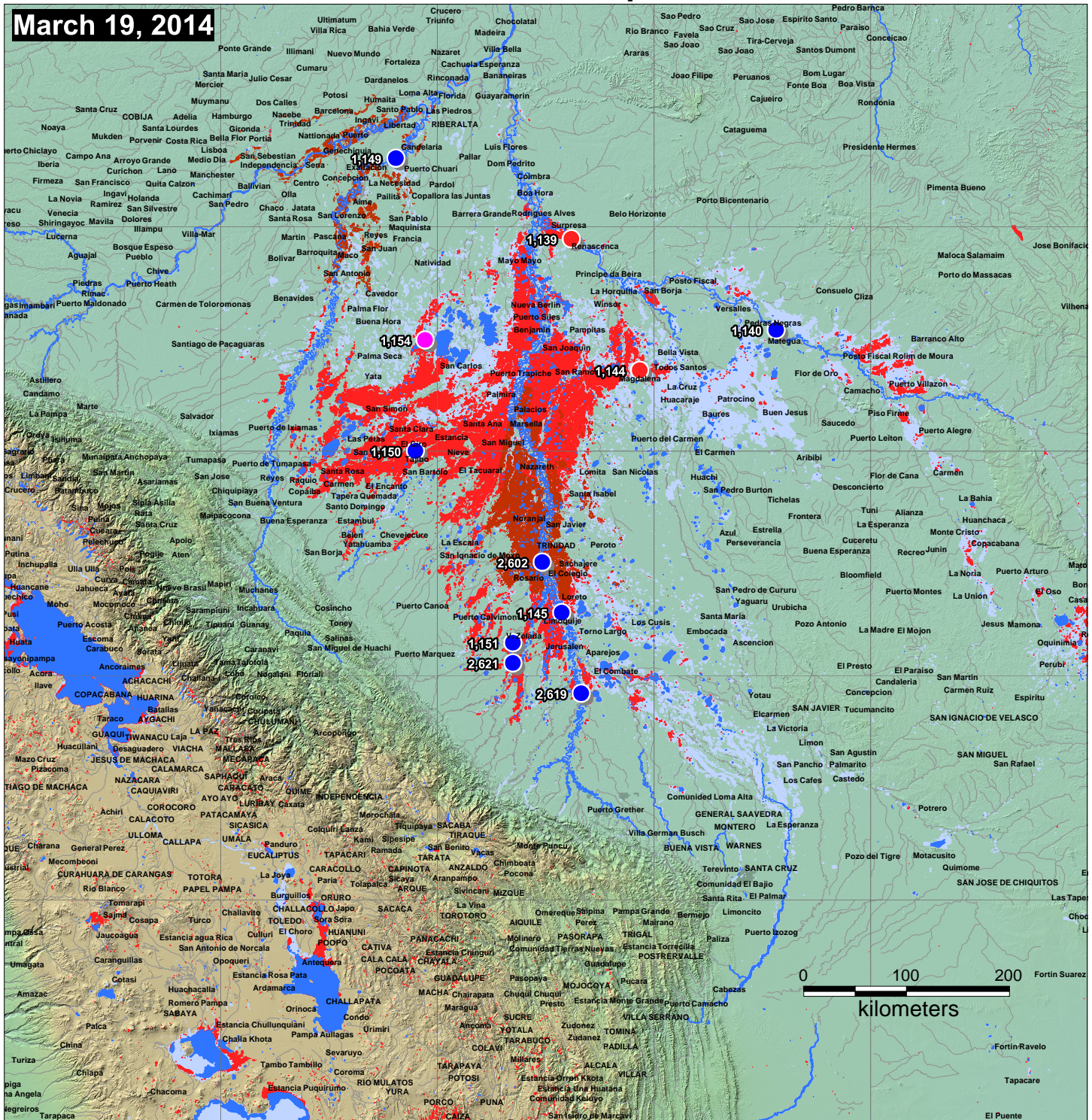


2014 Flooding In Bolivia, DFO # 4117

Flood Event Map



Mapping Source Data and Methods

This map may incorporate MODIS Rapid Response Subset 250 m data provided by NASA's LANCE System: <http://earthdata.nasa.gov/data/near-real-time-data/rapid-response/modis-subsets>. It may also incorporate 250 m data from an automated MODIS near real time processor (<http://oas.gsfc.nasa.gov/floodmap/>).

Landsat 8 data, if available, are provided by the United States Geological Survey Hazards Data Distribution System (HDDS). Landsat is jointly managed by NASA and the U.S. Geological Survey.

At selected locations, time series of satellite microwave-measurements of river discharge changes are available. Click on the colored dots in the online display: (<http://floodobservatory.colorado.edu/Version3/2014Bolivia.html>)

Citation for this map: Brakenridge, G. R., Slayback, D., Kettner, A.J., and Policelli, F., 2014, 2014 Flooding In Bolivia, DFO # 4117 Flood Event Map.

Funding support from NASA Applications Program and the GeoSUR Project, CAF - banco de desarrollo de América Latina

CAF, Mr. Eric Van Praag; NASA, Dr. Francis Lindsay

- Flooded during this event (MODIS)
- Flooded during this event (Landsat 8)
- Flooded in previous years
- Permanent surface water

River Discharge Status

- 4 Major Flooding (> 5 yr recurrence interval)
- 3 Moderate Flooding (>1.3 yr recurrence interval)
- 2 Normal Flow
- 1 <50% Mean Daily Runoff for this date